

SIEMENS SIMATIC HMI 6AV6 647-0AD11-3AX0 KTP600 Basic Color PN

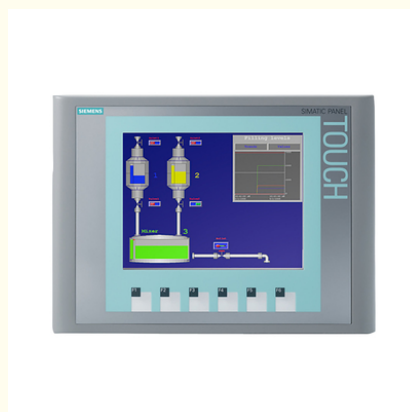
Basic Information

- Place of Origin: GERMANY
- Brand Name: SIEMENS
- Certification: CE
- Model Number: 6AV6647-0AD11-3AX0
- Minimum Order Quantity: 1
- Price: USD
- Packaging Details: 24*18*5
- Delivery Time: 5-10days
- Payment Terms: L/C, T/T
- Supply Ability: PC



Product Specification

- Ambient Temperature: -20 To +60°C
- Communication Interface: Ethernet, USB, RS232/485
- Display Resolution: 640 X 480 Pixels
- Display Size: 6 Inch
- Input Voltage: 24V DC
- Memory: 128MB RAM, 128MB Flash
- Operating System: WinCC Flexible 2008 SP2
- Product Name: SIEMENS SIMATIC HMI
- Protection Level: IP65
- Type: HMI
- Warranty: 1 Years
- Weight: 0.6kg



Product Description

SIEMENS SIMATIC HMI 6AV6 647-0AD11-3AX0 KTP600 Basic Color PN

*** spare part *** SIMATIC HMI KTP600 Basic Color PN, Basic Panel, key/touch operation, 6" TFT display, 256 colors, PROFINET interface, configurable as of WinCC flexible 2008 SP2 Compact/ WinCC Basic V10.5/ STEP 7 Basic V10.5, contains open-source software, which is provided free of charge see enclosed CD

Product Name: SIEMENS SIMATIC HMI 6AV6 647-0AD11-3AX0 KTP600 Basic Color PN

Introduction:

The SIEMENS SIMATIC HMI 6AV6 647-0AD11-3AX0 KTP600 Basic Color PN is a basic color operator panel designed for Human Machine Interface (HMI) applications. It provides a simple and cost-effective solution for controlling and monitoring industrial processes with color visualization.

Origin: Germany

Product Specifications:

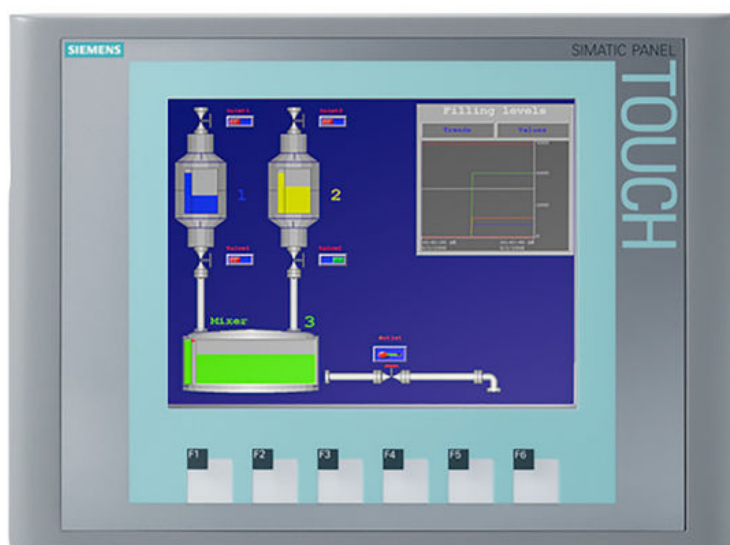
- Product Name: SIEMENS SIMATIC HMI 6AV6 647-0AD11-3AX0 KTP600 Basic Color PN
- Operator Panel Type: KTP600 Basic Color PN
- Display: Color TFT LCD
- Display Size: 6 inches
- Resolution: 640 x 480 pixels
- Communication Interface: PROFINET (PN)
- Number of Function Keys: 4
- Touchscreen: Resistive
- Memory: 4 MB
- IP Rating: IP65 (front panel)
- Operating Temperature: 0°C to 50°C
- Dimensions (W x H x D): 234 mm x 174 mm x 58 mm
- Weight: Approximately 1 kg

Product Features:

- 6-inch color TFT LCD display for vivid and intuitive visualization of information.
- Resistive touchscreen for user-friendly and precise operation.
- Supports PROFINET communication interface for seamless integration with industrial automation systems.
- 4 MB memory capacity for storing projects and data.
- Features 4 function keys for quick access to frequently used functions.
- Compact and rugged design with an IP65-rated front panel for protection against dust and water.
- Designed for easy installation and integration with the control system.
- Compatible with SIMATIC STEP 7 engineering software for efficient project development.

Functionality:

- The KTP600 Basic Color PN operator panel allows operators to control and monitor industrial processes with color visualization.
 - The color TFT LCD display provides vivid and intuitive visualization of information, enhancing operator understanding.
 - The resistive touchscreen enables user-friendly and precise operation, allowing for easy interaction with the HMI.
 - The PROFINET communication interface allows for seamless integration with the industrial control system, enabling real-time data exchange.
 - The panel's 4 MB memory capacity provides ample storage for projects and data.
 - The function keys provide quick access to frequently used functions, enhancing operational efficiency.
 - The compact and rugged design, along with the IP65-rated front panel, ensures durability and protection in harsh industrial environments.
 - The panel is designed for easy installation and integration with the control system, reducing setup time.
 - It is compatible with SIMATIC STEP 7 engineering software, enabling efficient project development and configuration.
- Please note that for detailed technical specifications and a comprehensive list of features, it is recommended to refer to the official documentation or product datasheet provided by SIEMENS.



HMI devices	Order Number
KTP400 Basic (Mono, PN)	6AV6 647-0AA11-3AX0
KTP600 Basic (Mono, PN)	6AV6 647-0AB11-3AX0
KTP600 Basic (Color, PN)	6AV6 647-0AD11-3AX0
KTP1000 Basic (Color, PN)	6AV6 647-0AF11-3AX0
TP1500 Basic (Color, PN)	6AV6 647-0AG11-3AX0



Shenzhen Voboal Industrial Automation Co., Ltd.



+8613760462017



sale@voboal.com



plcsimatic.com

Sienteng Zhongbao Industrial Park, Longdong Community, Baolong Street, Longgang District, Shenzhen