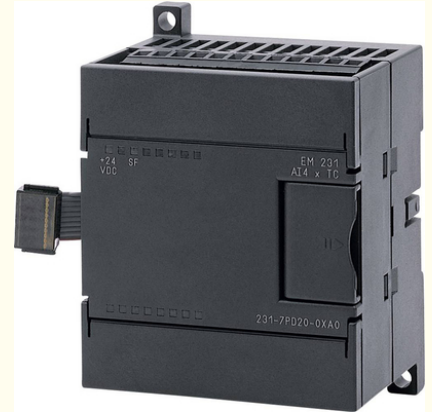


SIEMENS SIMATIC S7-200 PLC 6ES7231-0HC22-0XA0 EM 231 Analog Input, 4 Inputs

Our Product Introduction

Basic Information

- Place of Origin: Germany
- Brand Name: SIEMENS
- Certification: CE
- Model Number: 6ES7231-0HC22-0XA0
- Minimum Order Quantity: 1
- Price: USD
- Packaging Details: 20*20*10
- Delivery Time: 7-14 DAYS
- Payment Terms: L/C, T/T
- Supply Ability: 100PS



Product Specification

- Compatibility: Compatible With STEP 7 Programming Software
- Number Of Analog Inputs: 4/8/16
- Number Of Digital Inputs: 8/16/32/64/128/256
- CPU Type: S7-300
- Protection Class: IP20
- Weight: Standard: 0.5 Kg/Compact: 0.4 Kg
- Power Supply: 24 V DC
- Dimensions: Standard: 80 X 125 X 120 Mm/Compact: 80 X 125 X 90 Mm
- Number Of Analog Outputs: 2/4/8
- Operating Temperature: -20°C To +60°C
- Memory: 32 KB/64 KB/128 KB/256 KB/512 KB/1 MB/2 MB
- Certifications: CE, UL, CUL, FM, CSA
- Programming Language: Ladder Logic/Function Block

for more products please visit us on plcsimatic.com

Product Description

SIEMENS SIMATIC S7-200 PLC 6ES7231-0HC22-0XA0 EM 231 Analog Input, 4 Inputs

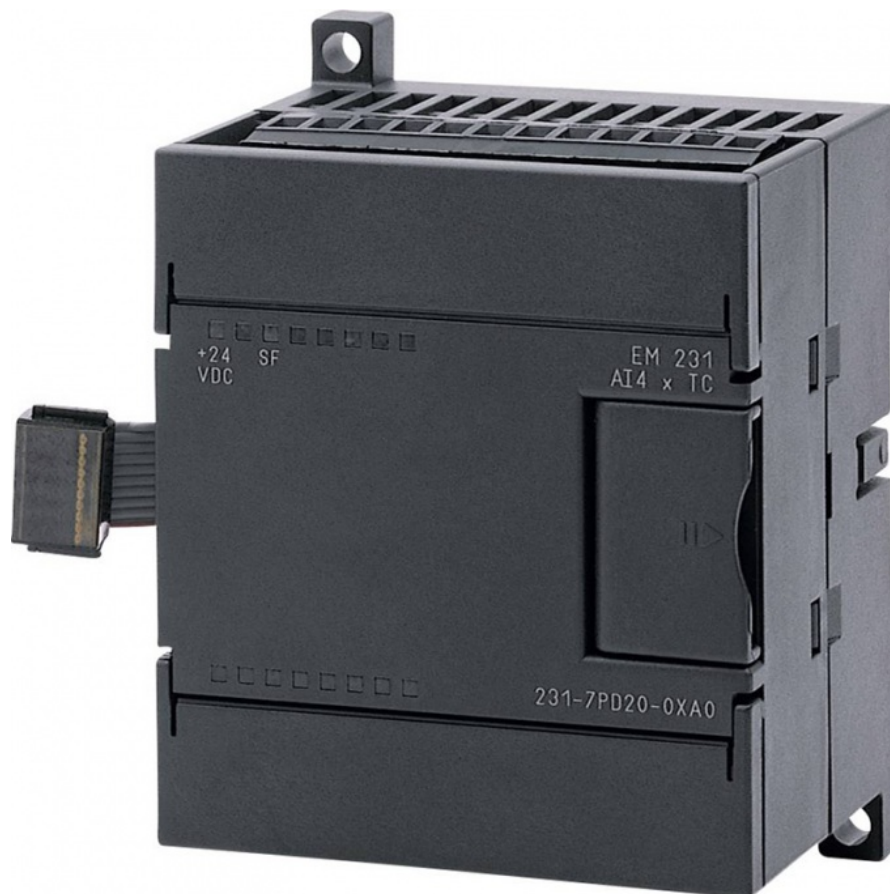
Apologies for the confusion in my previous responses. Let me provide you with the correct details about the SIEMENS SIMATIC S7-200 PLC 6ES7231-0HC22-0XA0 EM 231 module.

The SIEMENS SIMATIC S7-200 PLC 6ES7231-0HC22-0XA0 is an EM 231 analog input module for the S7-200 PLC series. Here are the correct details about the SIEMENS SIMATIC S7-200 PLC 6ES7231-0HC22-0XA0 EM 231 module:

1. EM 231 Module: The 6ES7231-0HC22-0XA0 is an EM 231 analog input module. It is designed to provide analog input capabilities to the S7-200 PLC system.
 2. Inputs: The EM 231 module you specified has 4 analog inputs. These inputs can be used to connect analog sensors or devices that provide continuous analog signals.
 3. Input Types: The EM 231 module supports different types of analog inputs, such as voltage inputs or current inputs. The specific input type depends on the configuration and jumper settings of the module.
 4. Input Resolution: The EM 231 module has a specified resolution for analog inputs, usually stated in bits or steps. This determines the level of detail or precision with which the module can measure analog input signals.
 5. Compatibility: The SIEMENS SIMATIC S7-200 PLC 6ES7231-0HC22-0XA0 EM 231 module is designed to be compatible with the S7-200 PLC series. Ensure compatibility with the specific PLC model and firmware version you are using.
- The EM 231 module extends the capability of the S7-200 PLC to handle analog input signals, allowing you to interface with devices that provide continuous analog measurements.

For more detailed specifications, wiring diagrams, and specific information about the SIEMENS SIMATIC S7-200 PLC 6ES7231-0HC22-0XA0 EM 231 module, it is recommended to refer to the official documentation provided by Siemens or contact their technical support for accurate and up-to-date information based on your requirements.

Price data	
Region Specific PriceGroup / Headquarter Price Group	S20 / 2ET
List Price	Show prices
Customer Price	Show prices
Surcharge for Raw Materials	None
Metal Factor	None
Delivery information	
Export Control Regulations	ECCN : N / AL : N
Estimated dispatch time (Working Days)	1 Day/Days
Net Weight (kg)	0,160 Kg
Packaging Dimension	8,80 x 9,50 x 6,90
Package size unit of measure	CM
Quantity Unit	1 Piece
Packaging Quantity	1
Additional Product Information	
EAN	4025515162575
UPC	Not available
Commodity Code	85389091
LKZ_FDB/ CatalogID	ST9-E5
Product Group	4557
Group Code	R131
Country of origin	China



Shenzhen Voboal Industrial Automation Co., Ltd.



+8613760462017



sale@voboal.com



plcsimatic.com

Sienteng Zhongbao Industrial Park, Longdong Community, Baolong Street, Longgang District, Shenzhen