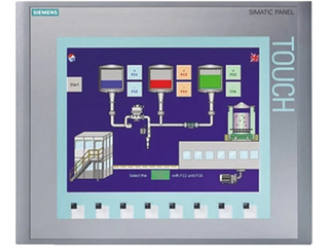


## SIEMENS SIMATIC HMI 6AV6652-7CA01-3AA0 Starter Package KTP600 Basic Color DP

Our Product Introduction

### Basic Information

- Place of Origin: Germany or China
- Brand Name: SIEMENS
- Certification: CE
- Model Number: 6AV6652-7CA01-3AA0
- Minimum Order Quantity: 1
- Price: USD
- Packaging Details: 40\*30\*10
- Delivery Time: 7-14DAYS
- Payment Terms: L/C, T/T
- Supply Ability: 100PS



### Product Specification

- Dimensions: 165 X 214 X 50 Mm
- Resolution: 480 X 272 Pixels
- Memory: 256 MB RAM,
- Processor: ARM Cortex-A8
- Certifications: CE,

for more products please visit us on [plcsimatic.com](http://plcsimatic.com)

## Product Description

### SIEMENS SIMATIC HMI 6AV6652-7CA01-3AA0 Starter Package KTP600 Basic Color DP

#### Product Introduction:

The SIEMENS SIMATIC HMI 6AV6652-7CA01-3AA0 is a Starter Package specifically designed for the KTP600 Basic Color DP. This package provides all the necessary components and software required to set up and operate the KTP600 Basic Color DP HMI (Human-Machine Interface) effectively.

#### Product Information and Specifications:

- Model: SIMATIC HMI 6AV6652-7CA01-3AA0
- Product Type: Starter Package
- Compatibility: KTP600 Basic Color DP

#### Product Attributes:

- Model: SIMATIC HMI 6AV6652-7CA01-3AA0
- Product Type: Starter Package
- Compatibility: KTP600 Basic Color DP

The SIEMENS SIMATIC HMI 6AV6652-7CA01-3AA0 Starter Package is specifically designed for the KTP600 Basic Color DP HMI. It provides a comprehensive solution for setting up and operating the HMI effectively.

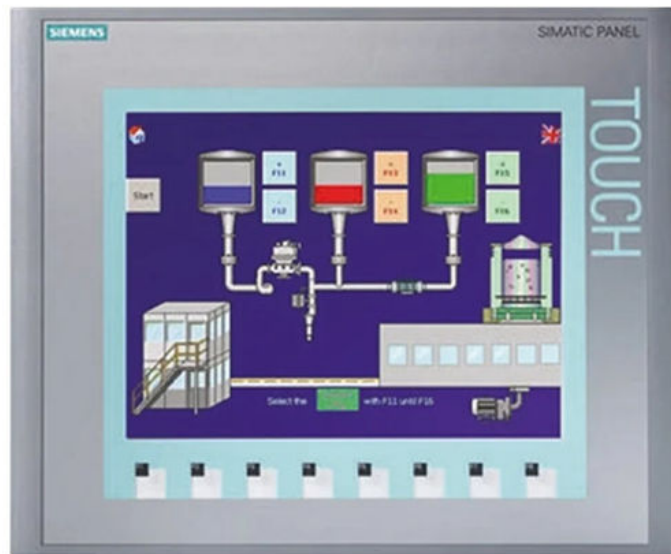
The Starter Package includes all the necessary components, hardware, and software required for a successful installation and configuration process. It typically includes the KTP600 Basic Color DP HMI device, power supply, cables, installation guides, and software licenses.

The KTP600 Basic Color DP HMI is a user-friendly device that allows operators to interact with machines and processes in industrial environments. It offers a basic color display and supports the use of Profibus DP communication protocol, enabling seamless integration with other automation devices.

By utilizing the Starter Package, users can simplify the deployment process and ensure a smooth integration of the KTP600 Basic Color DP HMI into their existing infrastructure. The provided resources facilitate quick setup and utilization of the HMI's features and functionalities.

It's important to note that the specific contents and software versions included in the Starter Package may vary. For detailed information on the package contents, software features, system requirements, and any additional attributes related to the SIEMENS SIMATIC HMI 6AV6652-7CA01-3AA0 Starter Package for KTP600 Basic Color DP, it is recommended to refer to the product documentation provided by Siemens or contact their technical support. They can provide specific guidance and assistance based on the product's specifications and requirements.

Price data	
Region Specific PriceGroup / Headquarter Price Group	2SP / 2SP
List Price	<a href="#">Show prices</a>
Customer Price	<a href="#">Show prices</a>
Surcharge for Raw Materials	None
Metal Factor	None
Delivery information	
Export Control Regulations	ECCN : 5D992 / AL : N
Estimated dispatch time (Working Days)	1 Day/Days
Net Weight (kg)	1,400 Kg
Packaging Dimension	28,00 x 33,00 x 19,00
Package size unit of measure	CM
Quantity Unit	0 Piece
Packaging Quantity	1
Additional Product Information	
EAN	Not available
UPC	Not available
Commodity Code	85371099
LKZ_FDB/ CatalogID	ST80E
Product Group	3401
Group Code	R119
Country of origin	Germany



**Shenzhen Voboal Industrial Automation Co., Ltd.**



+8613760462017



sale@voboal.com



plcsimatic.com

Sienteng Zhongbao Industrial Park, Longdong Community, Baolong Street, Longgang District, Shenzhen